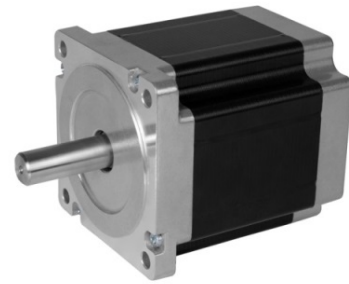


NEMA 34

1.8°



Step Angle	1.8°
Step Angle Accuracy	±5% (full step, no load)
Resistance Accuracy	±10%
Inductance Accuracy	±20%
Temperature Rise	80 °C Max.(rated current, 2 phase on)
Ambient Temperature	-20 °C ~ +50 °C
Insulation Resistance	100 MΩ Min., 500VDC
Dielectric Strength	820VAC, 1s, 3mA
Shaft Radial Play	0.02 Max. (450 g-load)
Shaft Axial Play	0.08 Max. (450 g-load)

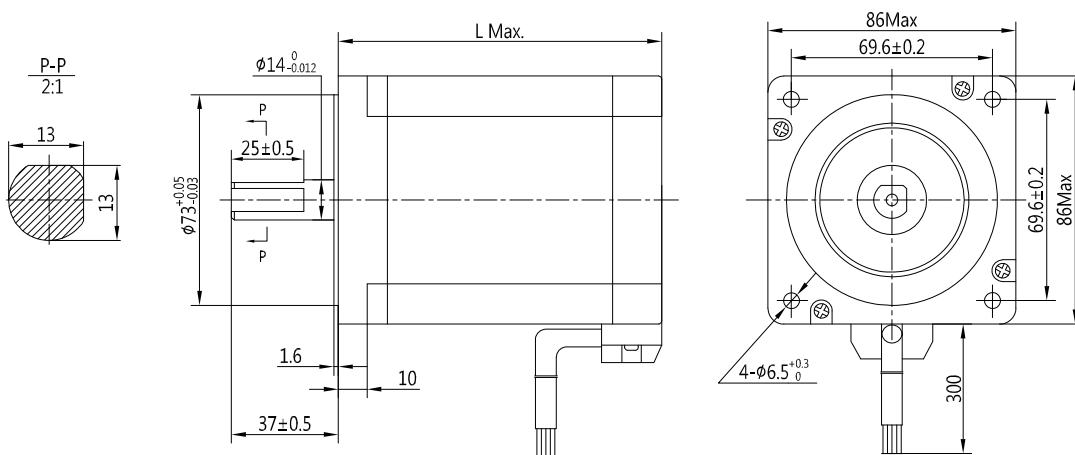
Specifications

Model	Current	Resistance	Inductance	Holding Torque	Bi/Unipolar	Detent Torque	Rotor Inertia	Weight	Length
	A/∅	Ω/∅	mH/∅	N.cm	# of Leads	N.cm	kg.cm ²	kg	mm
PHB86S66-801	3.8	0.6	3.5	310	Bi-P (8)	5.5	0.85	2.0	66
	1.9	2.4	14.0	310	Bi-S (8)				
	2.7	1.2	3.5	220	Uni (8)				
PHB86S66-802	5.6	0.3	1.6	310	Bi-P (8)	5.5	0.85	2.0	66
	2.8	1.2	6.4	310	Bi-S (8)				
	4.0	0.6	1.6	220	Uni (8)				
PHB86S66-803	7.0	0.2	1.0	310	Bi-P (8)	5.5	0.85	2.0	66
	3.5	0.8	4.0	310	Bi-S (8)				
	5.0	0.4	1.0	220	Uni (8)				
PHB86S78-801	3.8	0.8	5.6	420	Bi-P (8)	6.5	1.05	2.5	78
	1.9	3.2	22.4	420	Bi-S (8)				
	2.7	1.6	5.6	300	Uni (8)				
PHB86S78-802	5.6	0.35	3.0	420	Bi-P (8)	6.5	1.05	2.5	78
	2.8	1.4	12.0	420	Bi-S (8)				
	4.0	0.7	3.0	300	Uni (8)				
PHB86S78-803	7.0	0.25	1.8	420	Bi-P (8)	6.5	1.05	2.5	78
	3.5	1.0	7.2	420	Bi-S (8)				
	5.0	0.5	1.8	300	Uni (8)				
PHB86S98-801	3.8	0.95	8.6	650	Bi-P (8)	9.5	1.55	3.0	98
	1.9	3.8	34.4	650	Bi-S (8)				
	2.7	1.9	8.6	490	Uni (8)				
PHB86S98-802	5.6	0.5	4.1	650	Bi-P (8)	9.5	1.55	3.0	98
	2.8	2.0	16.4	650	Bi-S (8)				
	4.0	1.0	4.1	490	Uni (8)				
PHB86S98-803	7.0	0.32	2.4	650	Bi-P (8)	9.5	1.55	3.0	98
	3.5	1.3	9.6	650	Bi-S (8)				
	5.0	0.65	2.4	490	Uni (8)				

Specifications (Continued)

Model	Current	Resistance	Inductance	Holding Torque	Bi/Unipolar	Detent Torque	Rotor Inertia	Weight	Length
	A/∅	Ω/∅	mH/∅	N.cm	# of Leads	N.cm	kg.cm ²	kg	mm
PHB86S114-801	3.8	1.0	11.5	820	Bi-P (8)	12.5	1.80	4.0	114
	1.9	4.0	46	820	Bi-S (8)				
	2.7	2.0	11.5	580	Uni (8)				
PHB86S114-802	5.6	0.55	5.5	820	Bi-P (8)	12.5	1.80	4.0	114
	2.8	2.2	22.0	820	Bi-S (8)				
	4.0	1.1	5.5	580	Uni (8)				
PHB86S114-803	7.0	0.4	3.2	820	Bi-P (8)	12.5	1.80	4.0	114
	3.5	1.5	12.8	820	Bi-S (8)				
	5.0	0.75	3.2	580	Uni (8)				
PHB86S126-801	3.8	1.25	12.5	900	Bi-P (8)	18.5	2.20	4.5	126
	1.9	5.0	50	900	Bi-S (8)				
	2.7	2.5	12.5	640	Uni (8)				
PHB86S126-802	5.6	0.65	5.8	900	Bi-P (8)	18.5	2.20	4.5	126
	2.8	2.6	23.2	900	Bi-S (8)				
	4.0	1.3	5.8	640	Uni (8)				
PHB86S126-803	7.0	0.43	3.4	900	Bi-P (8)	18.5	2.20	4.5	126
	3.5	1.7	13.6	900	Bi-S (8)				
	5.0	0.85	3.4	640	Uni (8)				
PHB86S150-801	3.8	1.5	17.5	1200	Bi-P (8)	24.5	2.50	5.0	150
	1.9	5.8	70	1200	Bi-S (8)				
	2.7	2.9	17.5	850	Uni (8)				
PHB86S150-802	5.6	0.7	9.2	1200	Bi-P (8)	24.5	2.50	5.0	150
	2.8	2.8	36.8	1200	Bi-S (8)				
	4.0	1.4	9.2	850	Uni (8)				
PHB86S150-803	7.0	0.45	5.2	1200	Bi-P (8)	24.5	2.50	5.0	150
	3.5	1.8	20.8	1200	Bi-S (8)				
	5.0	0.9	5.2	850	Uni (8)				

Mechanical Dimension



Wiring Diagram

