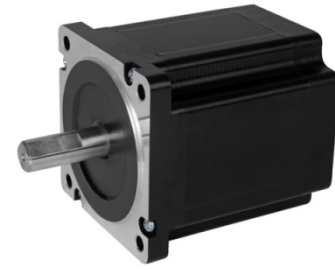


NEMA 34

0.9°

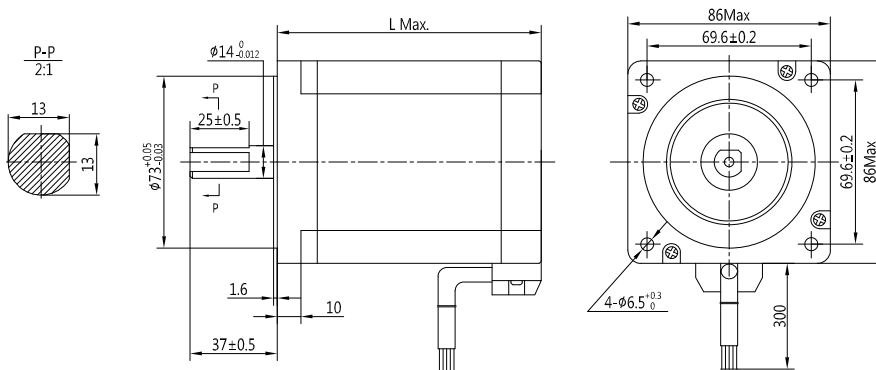


Step Angle	0.9°
Step Angle Accuracy	±5% (full step, no load)
Resistance Accuracy	±10%
Inductance Accuracy	±20%
Temperature Rise	80 °C Max.(rated current, 2 phase on)
Ambient Temperature	-20 °C ~ +50 °C
Insulation Resistance	100 MΩ Min., 500VDC
Dielectric Strength	820VAC, 1s, 3mA
Shaft Radial Play	0.02 Max. (450 g-load)
Shaft Axial Play	0.08 Max. (450 g-load)

## Specifications

Model	Current	Resistance	Inductance	Holding Torque	Detent Torque	Rotor Inertia	Bi/Unipolar	Weight	Length
	A/∅	Ω/∅	mH/∅	N.cm	N.cm	kg.cm <sup>2</sup>	# of Leads	kg	mm
PHB86M66-801	2.7	1.2	3.5	200	5.0	0.85	Uni (8)	2.0	66
PHB86M66-802	4.0	0.6	1.6	200	5.0	0.85	Uni (8)	2.0	66
PHB86M66-803	5.0	0.4	1.0	200	5.0	0.85	Uni (8)	2.0	66
PHB86M78-801	2.7	1.6	5.6	270	5.8	1.05	Uni (8)	2.5	78
PHB86M78-802	4.0	0.7	3.0	270	5.8	1.05	Uni (8)	2.5	78
PHB86M78-803	5.0	0.5	1.8	270	5.8	1.05	Uni (8)	2.5	78
PHB86M98-801	2.7	1.9	8.6	450	8.5	1.55	Uni (8)	3.0	98
PHB86M98-802	4.0	1.0	4.1	450	8.5	1.55	Uni (8)	3.0	98
PHB86M98-803	5.0	0.65	2.4	450	8.5	1.55	Uni (8)	3.0	98
PHB86M114-801	2.7	2.0	11.5	520	11.0	1.80	Uni (8)	4.0	114
PHB86M114-802	4.0	1.1	5.5	520	11.0	1.80	Uni (8)	4.0	114
PHB86M114-803	5.0	0.75	3.2	520	11.0	1.80	Uni (8)	4.0	114
PHB86M126-801	2.7	2.5	12.5	580	16.5	2.20	Uni (8)	4.5	126
PHB86M126-802	4.0	1.3	5.8	580	16.5	2.20	Uni (8)	4.5	126
PHB86M126-803	5.0	0.85	3.4	580	16.5	2.20	Uni (8)	4.5	126
PHB86M150-801	2.7	2.9	17.5	780	20.5	2.50	Uni (8)	5.0	150
PHB86M150-802	4.0	1.4	9.2	780	20.5	2.50	Uni (8)	5.0	150
PHB86M150-803	5.0	0.9	5.2	780	20.5	2.50	Uni (8)	5.0	150

## Mechanical Dimension



## Wiring Diagram

