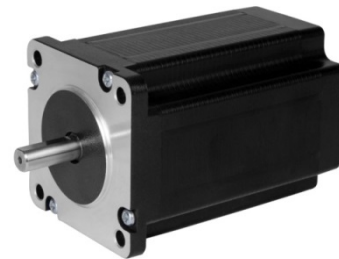


NEMA 24

1.2°

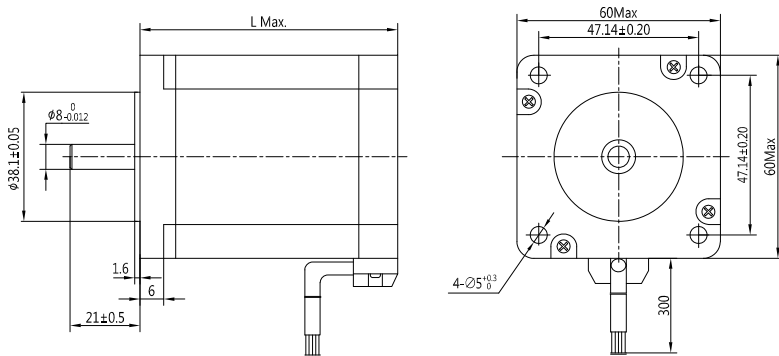
Step Angle	1.2°
Step Angle Accuracy	±5% (full step, no load)
Resistance Accuracy	±10%
Inductance Accuracy	±20%
Temperature Rise	80 °C Max.(rated current)
Ambient Temperature	-20 °C ~ +50 °C
Insulation Resistance	100 MΩ Min., 500VDC
Dielectric Strength	500 VAC for one minute
Shaft Radial Play	0.02 Max. (450 g-load)
Shaft Axial Play	0.08 Max. (450 g-load)



## Specifications

Model	Current	Resistance	Inductance	Holding Torque	Detent Torque	Rotor Inertia	# of Leads	Weight	Length
	A/∅	Ω/∅	mH/∅	N.cm	N.cm	g.cm <sup>2</sup>	Pin	g	mm
PHB60T54-335	3.5	0.8	1.8	80	3.5	280	3	580	54
PHB60T54-346	4.6	0.5	0.8	80	3.5	280	3	580	54
PHB60T64-335	3.5	1.0	2.5	110	5.0	380	3	950	64
PHB60T64-346	4.6	0.7	1.2	110	5.0	380	3	950	64
PHB60T76-335	3.5	1.2	3.2	130	6.5	440	3	1150	76
PHB60T76-346	4.6	0.8	1.5	130	6.5	440	3	1150	76
PHB60T90-335	3.5	1.5	4.5	160	8.0	580	3	1400	90
PHB60T90-346	4.6	1.0	2.5	160	8.0	580	3	1400	90

## Mechanical Dimension



## Wiring Diagram

