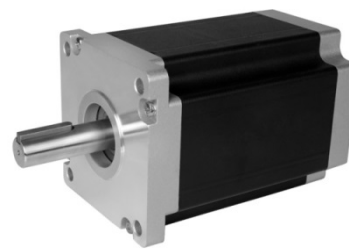


NEMA 42

1.2°

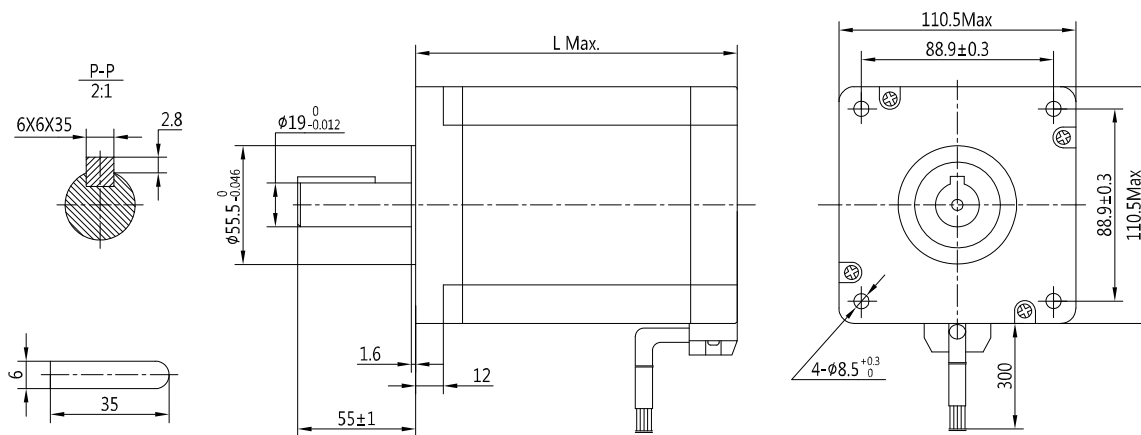
Step Angle	1.2°
Step Angle Accuracy	±5% (full step, no load)
Resistance Accuracy	±10%
Inductance Accuracy	±20%
Temperature Rise	80 °C Max.(rated current)
Ambient Temperature	-20 °C ~ +50 °C
Insulation Resistance	100 MΩ Min., 500VDC
Dielectric Strength	1800VAC, 1s, 5mA
Shaft Radial Play	0.02 Max. (450 g-load)
Shaft Axial Play	0.08 Max. (450 g-load)



Specifications

Model	Current	Resistance	Inductance	Holding Torque	Detent Torque	Rotor Inertia	# of Leads	Weight	Length
	A/∅	Ω/∅	mH/∅	N.m	N.cm	kg.cm ²	Pin	kg	mm
PHB110T126-360	6.0	0.8	6.0	11.0	28.5	9.0	3	6.8	126
PHB110T150-360	6.0	1.0	8.0	12.5	35.5	11.0	3	8.4	150
PHB110T165-360	6.0	1.2	9.5	14.0	45.5	13.0	3	9.3	165
PHB110T200-360	6.0	1.45	13.2	15.5	65.5	25.0	3	12.0	200

Mechanical Dimension



Wiring Diagram

