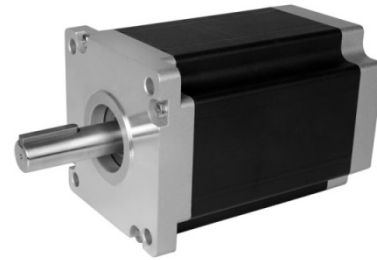


NEMA 42

1.8°

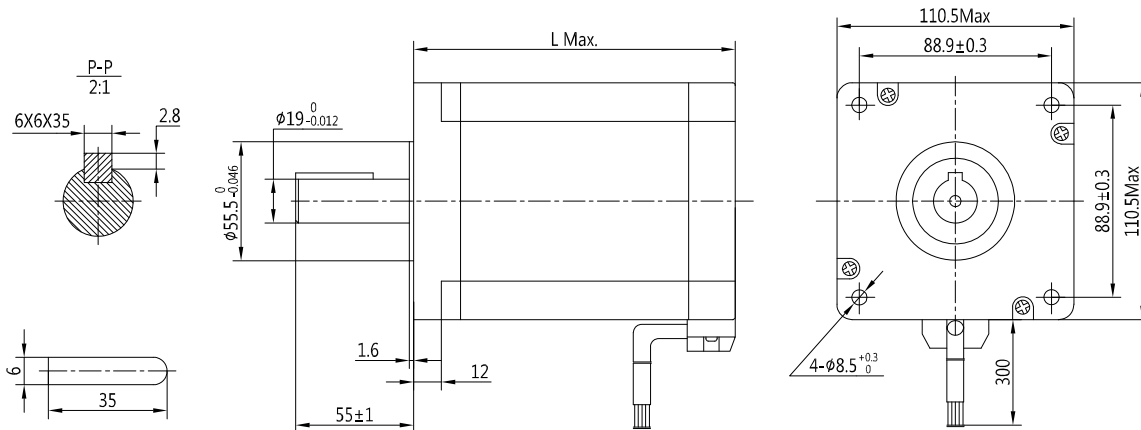
Step Angle	1.8°
Step Angle Accuracy	±5% (full step, no load)
Resistance Accuracy	±10%
Inductance Accuracy	±20%
Temperature Rise	80 °C Max.(rated current, 2 phase on)
Ambient Temperature	-20 °C ~ +50 °C
Insulation Resistance	100 MΩ Min., 500VDC
Dielectric Strength	1800VAC, 1s, 5mA
Shaft Radial Play	0.02 Max. (450 g-load)
Shaft Axial Play	0.08 Max. (450 g-load)



Specifications

Model	Current	Resistance	Inductance	Holding Torque	Detent Torque	Rotor Inertia	Bi/Unipolar	Weight	Length
	A/∅	Ω/∅	mH/∅	N.m	N.cm	kg.cm ²	# of Leads	Kg	mm
PHB110S100-460	6.0	0.5	6.0	12.0	20.5	4.0	Bi (4)	5.0	100
PHB110S117-460	6.0	0.57	7.5	15.0	24.5	6.0	Bi (4)	5.8	117
PHB110S126-460	6.0	0.66	10.5	18.0	28.5	9.0	Bi (4)	6.8	126
PHB110S150-460	6.0	0.8	13.5	22.0	35.5	11.0	Bi (4)	8.4	150
PHB110S165-460	6.0	0.87	16.0	26.0	45.5	13.0	Bi (4)	9.3	165
PHB110S200-460	6.0	1.1	22.0	29.0	65.5	25.0	Bi (4)	12.0	200
PHB110S200-480	8.0	0.65	13.5	29.0	65.5	25.0	Bi (4)	12.0	200

Mechanical Dimension



Wiring Diagram

4 Leads

